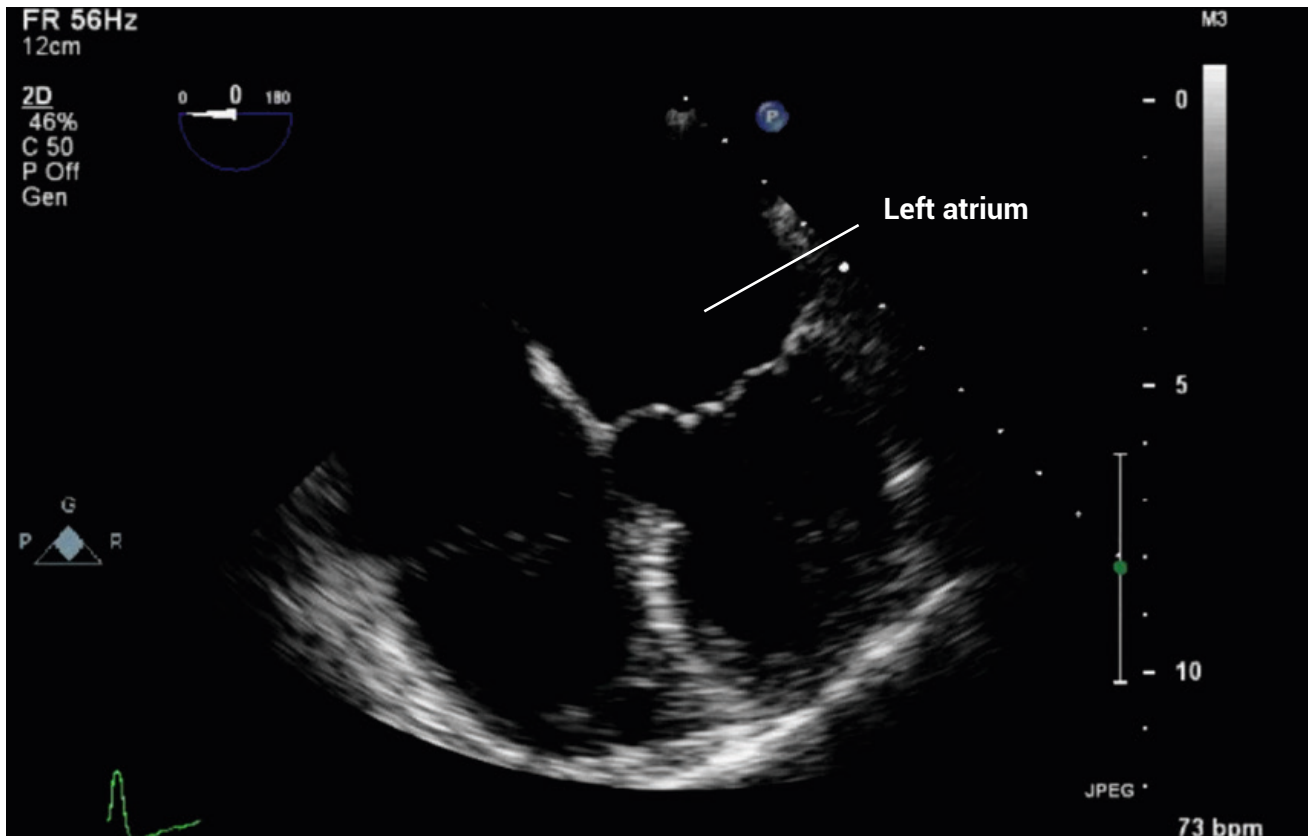


TEE ESSENTIALS

Assessment of the left atrium and appendage: Mid-esophageal four-chamber view

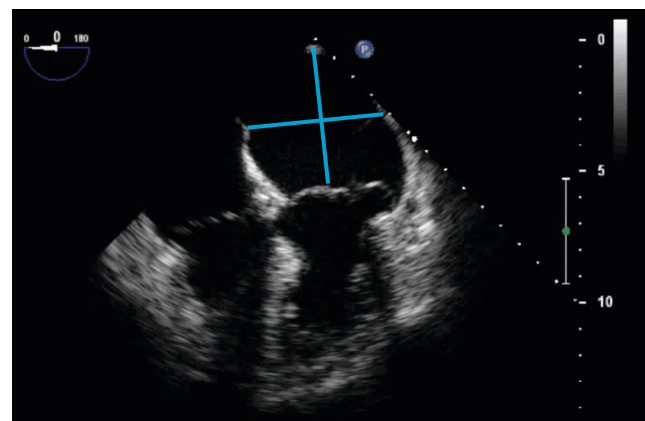
This TEE view is obtained at the mid-esophageal level, using a transducer angle of 0–20°. Be sure to assess the whole of the left atrium by turning the probe from left to right, in order to sweep the probe across the chamber.



Check for any abnormalities such as spontaneous contrast, left atrial thrombus, or an atrial myxoma.

In the mid-esophageal four-chamber view, measure the left atrial internal diameter in two axes in systole.

Normal anteroposterior diameter 38 ± 6 mm
Normal mediolateral diameter 39 ± 7 mm



Further reading

Cohen GI, White M, Sochowski RA, et al. 1995. Reference values for normal adult transesophageal echocardiographic measurements. *J Am Soc Echocardiogr*. 8: 221–230.